

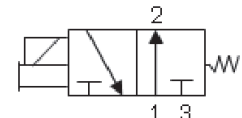
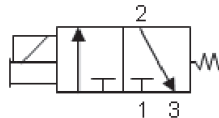


MEAD

# Low Power Isonic® V2 Valve

The versatile Isonic® V2 series of 2 & 3 way, normally open/closed, in-line or manifold solenoid valves is now available with expanded voltage and power consumption options.

The V2 is part of the patented Isonic® line of solenoid valves. High-strength engineered polymer construction results in a reliable, light-weight (1.5 oz.) valve that comes standard with quick-connect fittings. The valves can be applied stand-alone, or via a patented quick-release manifold system.



### New Voltage/Power Options

- **Up to 60% power consumption savings**
- **Reduced power consumption**
  - Results in energy savings
  - Lowers overall operating costs
- **Safety**
  - Low voltage options reduce the risk of electrical arcing
  - Ideal for volatile environments
- **Stand alone devices**
  - Reduced power consumption helps maximize the life of battery operated devices

Specifications - Normally Closed	
<b>Design</b>	Direct Acting
<b>Media</b>	Air or Inert gas
<b>Lubrication</b>	None Required
<b>Filtration</b>	40 micron
<b>Cycle Life</b>	50,000,000 cycles
<b>Orifice Size</b>	A: 0.025" / .65mm
	B: 0.035" / .90mm
	C: 0.055" / 1.40mm
<b>Flow</b>	A: 0.01 Cv
	B: 0.02 Cv
	C: 0.05 Cv
<b>Maximum Pressure by Power/Orifice Combination</b>	<b>Standard Power</b>
	A: 120 PSI/ 8.3 bar
	B: 120 PSI/ 8.3 bar
	C: 30 PSI/ 2.1 bar
	<b>Low Power</b>
A: 45 PSI/ 3 bar	
B: 45 PSI/ 3 bar	
C: N/A	
<b>Vacuum</b>	To 28 in Hg
<b>Temperature Range</b>	0- 120°F/ -18 - -49°C
<b>Tubing</b>	5/32" or 4mm
<b>Mounting Holes</b>	.156" diameter (2 holes)
<b>Seals</b>	Viton and Nitrile
<b>Weight</b>	1.5 oz (per valve)

Specifications - Normally Open	
<b>Design</b>	Direct Acting
<b>Media</b>	Air or Inert gas
<b>Lubrication</b>	None Required
<b>Filtration</b>	40 micron
<b>Cycle Life</b>	50,000,000 cycles
<b>Orifice Size</b>	A: 0.025" / .65mm
	B: 0.035" / .90mm
	C: 0.055" / 1.40mm
<b>Flow</b>	A: 0.01 Cv
	B: 0.02 Cv
	C: 0.05 Cv
<b>Maximum Pressure by Power/Orifice Combination</b>	<b>Standard Power</b>
	A: N/A
	B: 90 PSI/ 6.2 bar
	C: 25 PSI/ 1.6 bar
	<b>Low Power</b>
A: N/A	
B: 37 PSI/ 2.5 bar	
C: N/A	
<b>Vacuum</b>	To 28 in Hg
<b>Temperature Range</b>	0 - 120°F/ -18 - -49°C
<b>Tubing</b>	5/32" or 4mm
<b>Mounting Holes</b>	.156" diameter (2 holes)
<b>Seals</b>	Viton and Nitrile
<b>Weight</b>	1.5 oz (per valve)

Mead Fluid Dynamics  
 Chicago, IL 60641  
 Telephone: 773.685.6800  
 Toll Free: 800-44-BIMBA  
 Email: sales@mead-usa.com  
 www.mead-usa.com

Leaders in Actuation.

To learn more about this product, scan this QR code with your mobile device.





## How to Order

Valves:

**V 2 B 04 - B W 1 - L - T1**

Product Category  
V = Valve

Family  
2 = Isonic® 2000

Orifice Size  
A = 0.025" (0.6mm) (only with Normally Closed)  
B = 0.035" (0.9mm)  
C = 0.055" (1.4mm) (Not available with Low Power option)

Flow Pattern  
02 = 2-Way Normally Closed  
03 = 3-Way Normally Open  
04 = 3-Way Normally Closed  
05 = Vacuum (3-Way) Normally Closed  
06 = Vacuum (2-Way) Normally Closed  
07 = Vacuum (3-Way) Normally Open

Options

L = Low Power (Only available with Connector Z)  
(Check chart for voltage options)  
T1 = Tapped Exhaust (10-32)  
T2 = Tapped Exhaust (M5x0.80)

LED

0 = No LED (only available with connector Z)  
1 = LED standard (not available with connector Z)

Connector

W = Mini Quick Connector (with PCB)  
Required for Manifold  
X = 8mm Micro DIN (with PCB)  
Connector not included  
Y = Flying Lead (with PCB)  
Z = Flying Lead (no PCB- DC only)

Solenoid Voltage (See Option Combination Availability)

A = 12VDC  
B = 24VDC  
D = 24 50/60 Hz VAC  
F = 120 50/60 Hz VAC  
R = 5VDC  
M = 3VDC

Solenoid Data						
Standard Power (1.5 Watt)						
Voltage	3VDC	5VDC	12VDC	24VDC	24VAC	120VAC
Amps	N/A	N/A	0.133	0.058	0.058	0.014
Resistance	N/A	N/A	92Ω	406Ω	406Ω	8350Ω
Initial Power	N/A	N/A	1.6W	1.4W	1.4W	1.7W
Continuous On	N/A	N/A	1.3W	1.2W	1.2W	1.5W
Low Power (0.5 Watt)						
Voltage	3VDC	5VDC	12VDC	24VDC	24VAC	120VAC
Amps	0.187	0.1	0.047	0.022	N/A	N/A
Resistance	16Ω	49Ω	257Ω	1086Ω	N/A	N/A
Initial Power	0.56W	0.5W	0.56W	0.53W	N/A	N/A
Continuous On	0.51W	0.47W	0.51W	0.49W	N/A	N/A

Option Combination Availability		
Voltage	"Standard Power 1.5W, 8 bar"	"Low Power (L option) 0.5W, 3 bar"
3VDC		•
5VDC		•
12VDC	•	•
24VDC	•	•
24VAC	•	
120VAC	•	

For accessories and more information on this product, please visit our website, [bimba.com](http://bimba.com).

### Leaders in Actuation.

Mead Fluid Dynamics  
Chicago, IL 60641  
Telephone: 773.685.6800  
Toll Free: 800-44-BIMBA  
Email: [sales@mead-usa.com](mailto:sales@mead-usa.com)  
[www.mead-usa.com](http://www.mead-usa.com)



Worldwide distribution means there is a professional stocking Bimba distributor nearby ready to service your needs.